

# Test Report

Report No. RLSZD000872870001

Page 1 of 6

**Applicant** SHEN ZHEN YANDA ELECTRONICS TECHNOLOGY CO.,LTD  
**Address** NO.7 BUILDING GANGZAI INDUSTRIAL ZONE FURONG INDUSTRIAL ZONE  
XINGQIAO SHAJING BAOAN SHENZHEN

**Report on the submitted sample(s) said to be**

**Sample Name** Flat Paper Adhesive Tape Composited With PET Film  
**Sample Description** Red tape  
**Material** Crepe paper+ PET+ rubber solution  
**Manufacturer** SHEN ZHEN YANDA ELECTRONICS TECHNOLOGY CO.,LTD  
**Sample Received Date** Apr. 13, 2011  
**Testing Period** Apr. 13, 2011 to Apr. 19, 2011

**Test Requested** As specified by client, to determine the Lead(Pb), Cadmium(Cd), Mercury(Hg), Hexavalent Chromium(Cr(VI)), Polybrominated Biphenyls(PBBs), Polybrominated Diphenyl Ethers(PBDEs), Fluorine(F), Chlorine(Cl), Bromine(Br), Iodine(I) content in the submitted sample.

**Test Method** Please refer to the following page(s).

**Test Result(s)** Please refer to the following page(s).

Tested by



Approved by

Technical Manager

Inspected by

*Vargas*

Date

Apr. 19, 2011

No. 12106482

# Test Report

Report No. RLSZD000872870001

Page 2 of 6

## Test Method

Test Item(s)	Test Method	Measured Equipment(s)	MDL
Lead(Pb)	IEC 62321:2008 Ed.1 Sec.8	ICP-OES	2 mg/kg
Cadmium(Cd)	IEC 62321:2008 Ed.1 Sec.8	ICP-OES	2 mg/kg
Mercury(Hg)	IEC 62321:2008 Ed.1 Sec.7	ICP-OES	2 mg/kg
Hexavalent Chromium(Cr(VI))	IEC 62321:2008 Ed.1 Annex C	UV-Vis	2 mg/kg
Polybrominated Biphenyls(PBBs)	IEC 62321:2008 Ed.1 Annex A	GC-MS	5 mg/kg
Polybrominated Diphenyl Ethers(PBDEs)	IEC 62321:2008 Ed.1 Annex A	GC-MS	5 mg/kg
Fluorine(F)	Refer to BS EN 14582:2007	IC	10 mg/kg
Chlorine(Cl)	Refer to BS EN 14582:2007	IC	10 mg/kg
Bromine(Br)	Refer to BS EN 14582:2007	IC	10 mg/kg
Iodine(I)	Refer to BS EN 14582:2007	IC	10 mg/kg

## Test Result(s)

Tested Item(s)	Content
Lead(Pb)	N.D.
Cadmium (Cd)	N.D.
Mercury(Hg)	N.D.
Hexavalent Chromium(Cr(VI))	N.D.

Tested Item(s)	Content
<b>Polybrominated Biphenyls(PBBs)</b>	
Monobromobiphenyl	N.D.
Dibromobiphenyl	N.D.
Tribromobiphenyl	N.D.
Tetrabromobiphenyl	N.D.
Pentabromobiphenyl	N.D.
Hexabromobiphenyl	N.D.
Heptabromobiphenyl	N.D.
Octabromobiphenyl	N.D.
Nonabromobiphenyl	N.D.
Decabromobiphenyl	N.D.

# Test Report

Report No. RLSZD000872870001

Page 3 of 6

Tested Item(s)	Content
<b>Polybrominated Diphenyl Ethers(PBDEs)</b>	
Monobromodiphenyl ether	N.D.
Dibromodiphenyl ether	N.D.
Tribromodiphenyl ether	N.D.
Tetrabromodiphenyl ether	N.D.
Pentabromodiphenyl ether	N.D.
Hexabromodiphenyl ether	N.D.
Heptabromodiphenyl ether	N.D.
Octabromodiphenyl ether	N.D.
Nonabromodiphenyl ether	N.D.
Decabromodiphenyl ether	N.D.

Tested Item(s)	Content
<b>Halogen(s)</b>	
Fluorine (F)	N.D.
Chlorine (Cl)	167 mg/kg
Bromine (Br)	N.D.
Iodine (I)	N.D.

**Note:** The sample had been dissolved totally tested for Lead, Cadmium, Mercury.

- MDL = Method Detection Limit
- N.D. = Not Detected (<MDL )
- mg/kg = ppm = parts per million

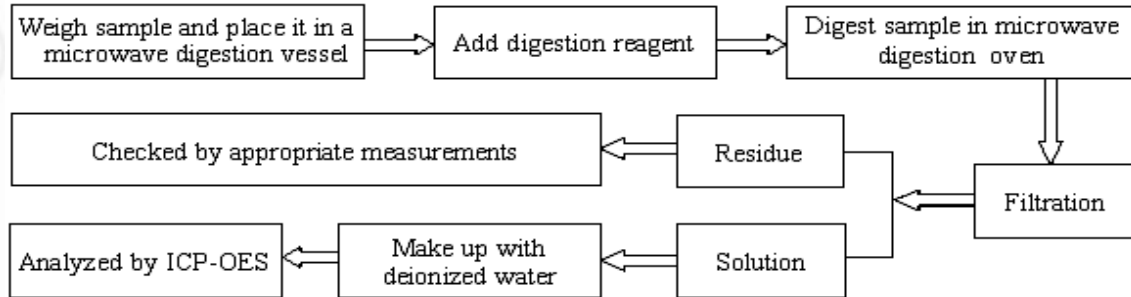
# Test Report

Report No. RLSZD000872870001

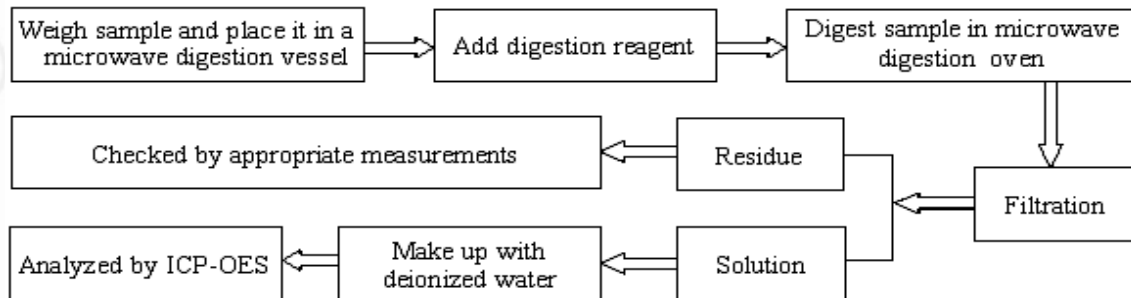
Page 4 of 6

## Test Process

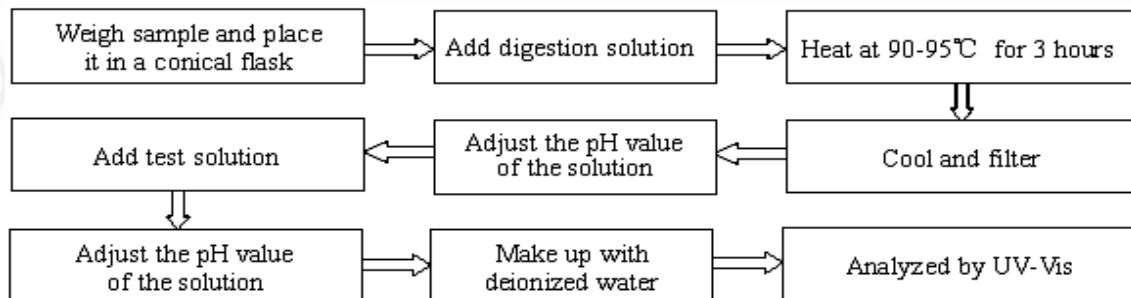
### 1. Lead(Pb), Cadmium(Cd)



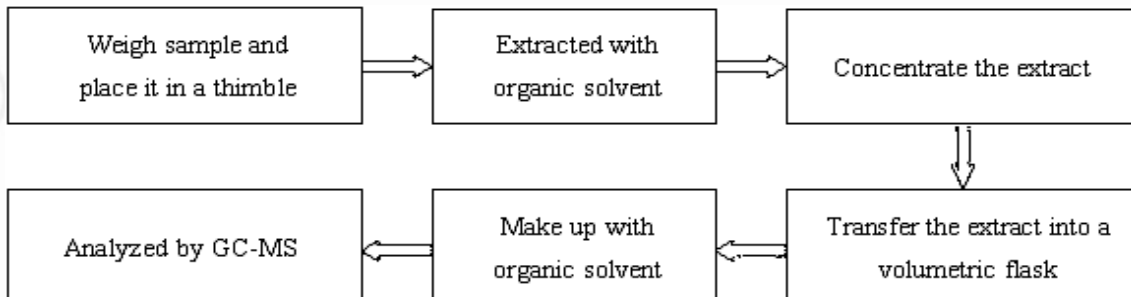
### 2. Mercury(Hg)



### 3. Hexavalent Chromium(Cr(VI))



### 4. Polybrominated Biphenyls(PBBs), Polybrominated Diphenyl Ethers(PBDEs)

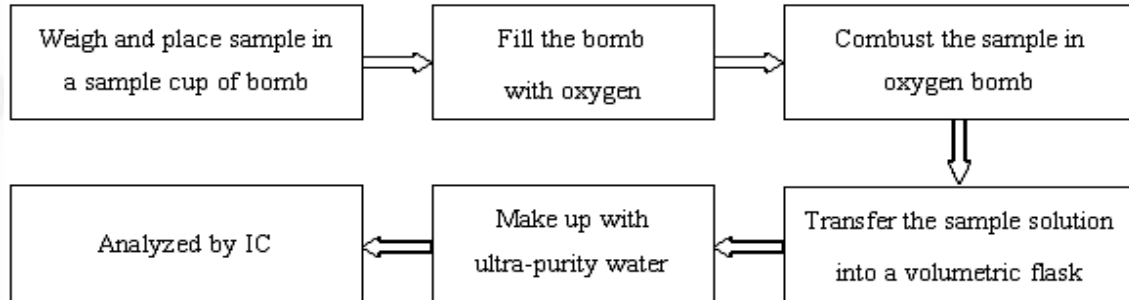


# Test Report

Report No. RLSZD000872870001

Page 5 of 6

## 5. Fluorine(F), Chlorine(Cl), Bromine(Br), Iodine(I)

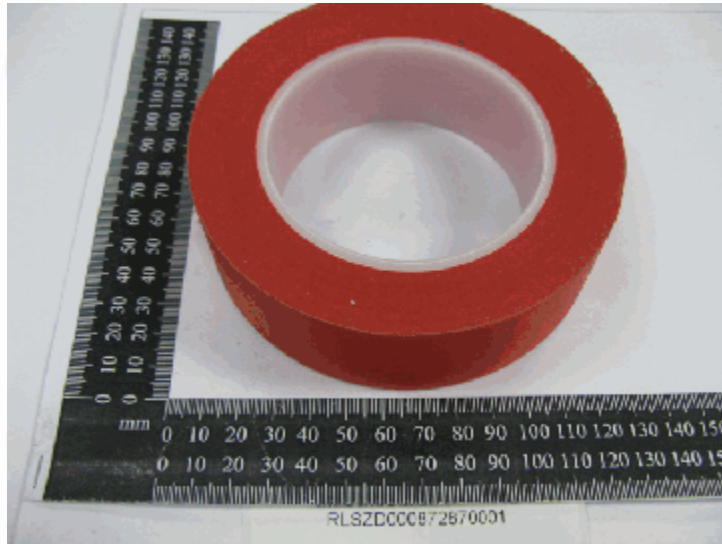


# Test Report

Report No. RLSZD000872870001

Page 6 of 6

## Photo(s) of the sample(s)



\*\*\* End of report \*\*\*

This report is considered invalidated without the Special Seal for Inspection of the CTI. This report shall not be altered, increased or deleted. The results shown in this test report refer only to the sample(s) tested. Without written approval of CTI, this test report shall not be copied except in full and published as advertisement.

Building C, Hongwei Industrial Zone, Baoan 70 District, Shenzhen