

Test Report

Report No. RLSZD000952120001

Page 1 of 6

Applicant SHEN ZHEN SHI XINKECHUANG ELECTRONICS TECH CO.,LTD

Address 4F,BLDG B,NO.3,SHANGXUE TECHNOLOGY PARK FIRST ROAD,BANTIAN,LONGGANG DISTICT,SHENZHEN CITY CHINA

Report on the submitted sample(s) said to be

Sample Name PET胶带类

Sample Description Transparent tape

Part No. XKC-C3560/G3560/C5080/G5080/C3639/C3639W/G3639/G3639W/C2570
W/G2555/G2560等等型号

Buyer SONY

Sample Received Date Jun. 27, 2011

Testing Period Jun. 27, 2011 to Jul. 4, 2011

Test Requested As specified by client, to determine the Lead(Pb), Cadmium(Cd), Mercury(Hg), Hexavalent Chromium(Cr(VI)), Polybrominated Biphenyls(PBBs), Polybrominated Diphenyl Ethers(PBDEs), Fluorine(F), Chlorine(Cl), Bromine(Br), Iodine(I) content in the submitted sample.

Test Method Please refer to the following page(s).

Test Result(s) Please refer to the following page(s).

Tested by



Technical Manager

Inspected by

Vargas

Approved by

Date

Jul. 4, 2011

No. 12106696

Test Report

Report No. RLSZD000952120001

Page 2 of 6

Test Method

Test Item(s)	Test Method	Measured Equipment(s)	MDL
Lead(Pb)	IEC 62321:2008 Ed.1 Sec.8	ICP-OES	2 mg/kg
Cadmium(Cd)	IEC 62321:2008 Ed.1 Sec.8	ICP-OES	2 mg/kg
Mercury(Hg)	IEC 62321:2008 Ed.1 Sec.7	ICP-OES	2 mg/kg
Hexavalent Chromium(Cr(VI))	IEC 62321:2008 Ed.1 Annex C	UV-Vis	2 mg/kg
Polybrominated Biphenyls(PBBs)	IEC 62321:2008 Ed.1 Annex A	GC-MS	5 mg/kg
Polybrominated Diphenyl Ethers(PBDEs)	IEC 62321:2008 Ed.1 Annex A	GC-MS	5 mg/kg
Fluorine(F)	Refer to BS EN 14582:2007	IC	10 mg/kg
Chlorine(Cl)	Refer to BS EN 14582:2007	IC	10 mg/kg
Bromine(Br)	Refer to BS EN 14582:2007	IC	10 mg/kg
Iodine(I)	Refer to BS EN 14582:2007	IC	10 mg/kg

Test Result(s)

Tested Item(s)	Content
Lead(Pb)	N.D.
Cadmium (Cd)	N.D.
Mercury(Hg)	N.D.
Hexavalent Chromium(Cr(VI))	N.D.

Tested Item(s)	Content
Polybrominated Biphenyls(PBBs)	
Monobromobiphenyl	N.D.
Dibromobiphenyl	N.D.
Tribromobiphenyl	N.D.
Tetrabromobiphenyl	N.D.
Pentabromobiphenyl	N.D.
Hexabromobiphenyl	N.D.
Heptabromobiphenyl	N.D.
Octabromobiphenyl	N.D.
Nonabromobiphenyl	N.D.
Decabromobiphenyl	N.D.

Test Report

Report No. RLSZD000952120001

Page 3 of 6

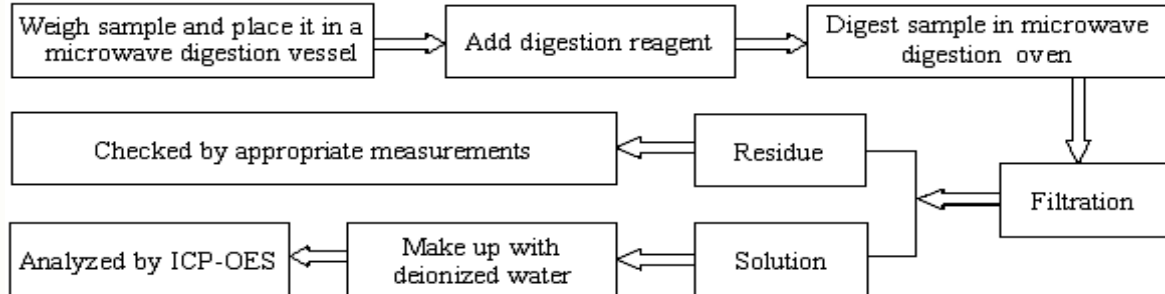
Tested Item(s)	Content
Polybrominated Diphenyl Ethers(PBDEs)	
Monobromodiphenyl ether	N.D.
Dibromodiphenyl ether	N.D.
Tribromodiphenyl ether	N.D.
Tetrabromodiphenyl ether	N.D.
Pentabromodiphenyl ether	N.D.
Hexabromodiphenyl ether	N.D.
Heptabromodiphenyl ether	N.D.
Octabromodiphenyl ether	N.D.
Nonabromodiphenyl ether	N.D.
Decabromodiphenyl ether	N.D.
Tested Item(s)	Content
Halogen(s)	
Fluorine (F)	N.D.
Chlorine (Cl)	194 mg/kg
Bromine (Br)	N.D.
Iodine (I)	N.D.

Note: The sample had been dissolved totally tested for Lead, Cadmium, Mercury.

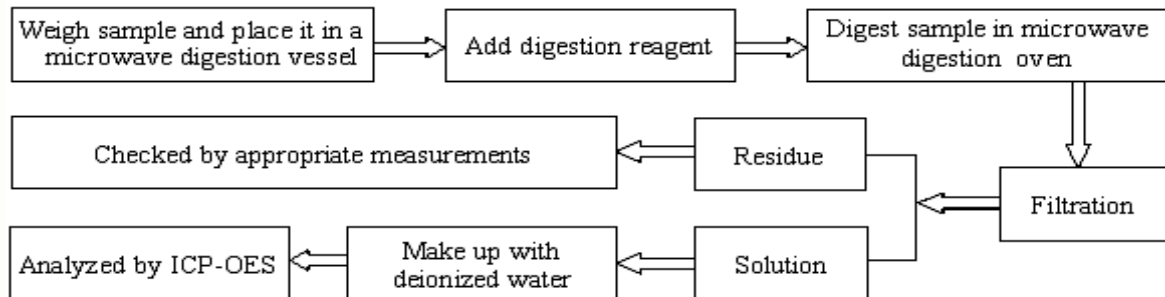
- MDL = Method Detection Limit
- N.D. = Not Detected (<MDL)
- mg/kg = ppm = parts per million

Test Process

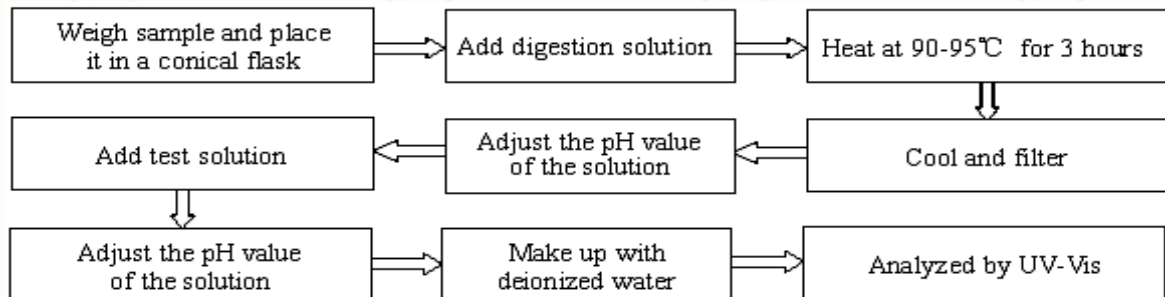
1. Lead(Pb), Cadmium(Cd)



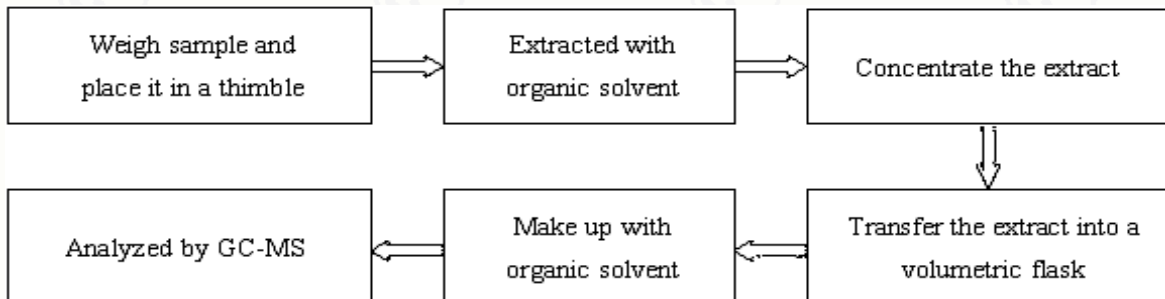
2. Mercury(Hg)



3. Hexavalent Chromium(Cr(VI))



4. Polybrominated Biphenyls(PBBs), Polybrominated Diphenyl Ethers(PBDEs)

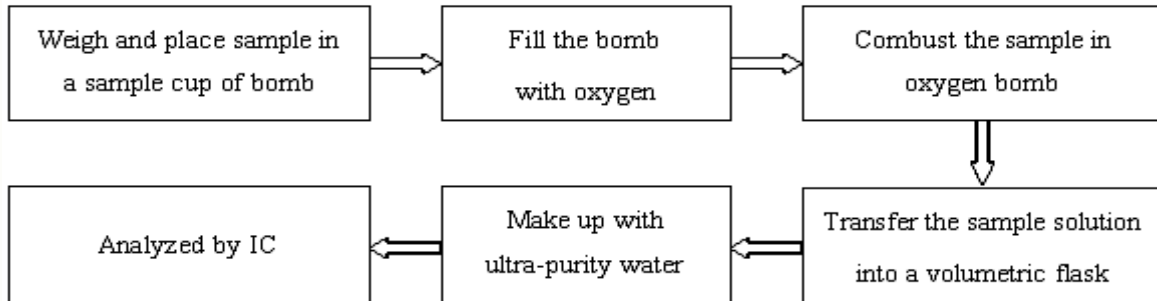


Test Report

Report No. RLSZD000952120001

Page 5 of 6

5. Fluorine(F), Chlorine(Cl), Bromine(Br), Iodine(I)

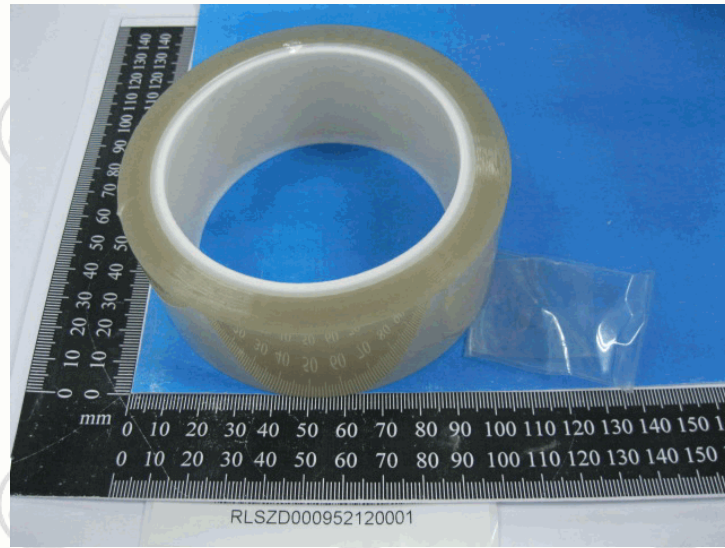


Test Report

Report No. RLSZD000952120001

Page 6 of 6

Photo(s) of the sample(s)



*** End of report ***

This report is considered invalidated without the Special Seal for Inspection of the CTI. This report shall not be altered, increased or deleted. The results shown in this test report refer only to the sample(s) tested. Without written approval of CTI, this test report shall not be copied except in full and published as advertisement.

Building C, Hongwei Industrial Zone, Baoan 70 District, Shenzhen